

INTEGRA ISF1 FFS EDITION

The INTEGRA filling systems are stationary and completely encapsulated packing systems for filling chemical and food products using the Plug & Pack principle. The INTEGRA ISF1 FFS Edition is our integrated packing solution for the handling and filling of tubular film. All system models are mounted in a frame and are modular expandable for performances of up to 2,200 bags/hr.



Characteristics

- Secure bag handling by low-maintenance grippers
- Easy access thanks to an open machine design
- Automatic machine performance optimization through smart production monitoring

- Easy operation and maintenance through clear operator guidance via interactive touchpanel for parameter display in the form of 3D graphics and videos
- Continuous recording of operating data for automatic maintenance advisory
- Lower noise level through intelligent pneumatic cylinder deaeration
- Modular expandability to up to 2,600 bags/hr

Options

- Automatic film roll change
- Mobile machine execution (on wheels or rails)
- World-wide access to the production data
- HMI with 15-inch display
- Integrated toolbox for fast maintenance
- Collection tray for easier cleaning
- Personalized RFID machine log-in sticks with different machine permission levels
- Integrated diagnostic illumination recognition of the machine status from afar
- Special designs for salt, fertilizer and caprolactam
- Stainless steel design
- Explosion-proof designs
- Additional equipment such as carry-handle former, thermal printer, etc.



The INTEGRA ISF FFS EDITION tags with:

- ✓ Its performance
- ✓ Its availability
- ✓ Its cleanliness
- ✓ Its intuitive operation

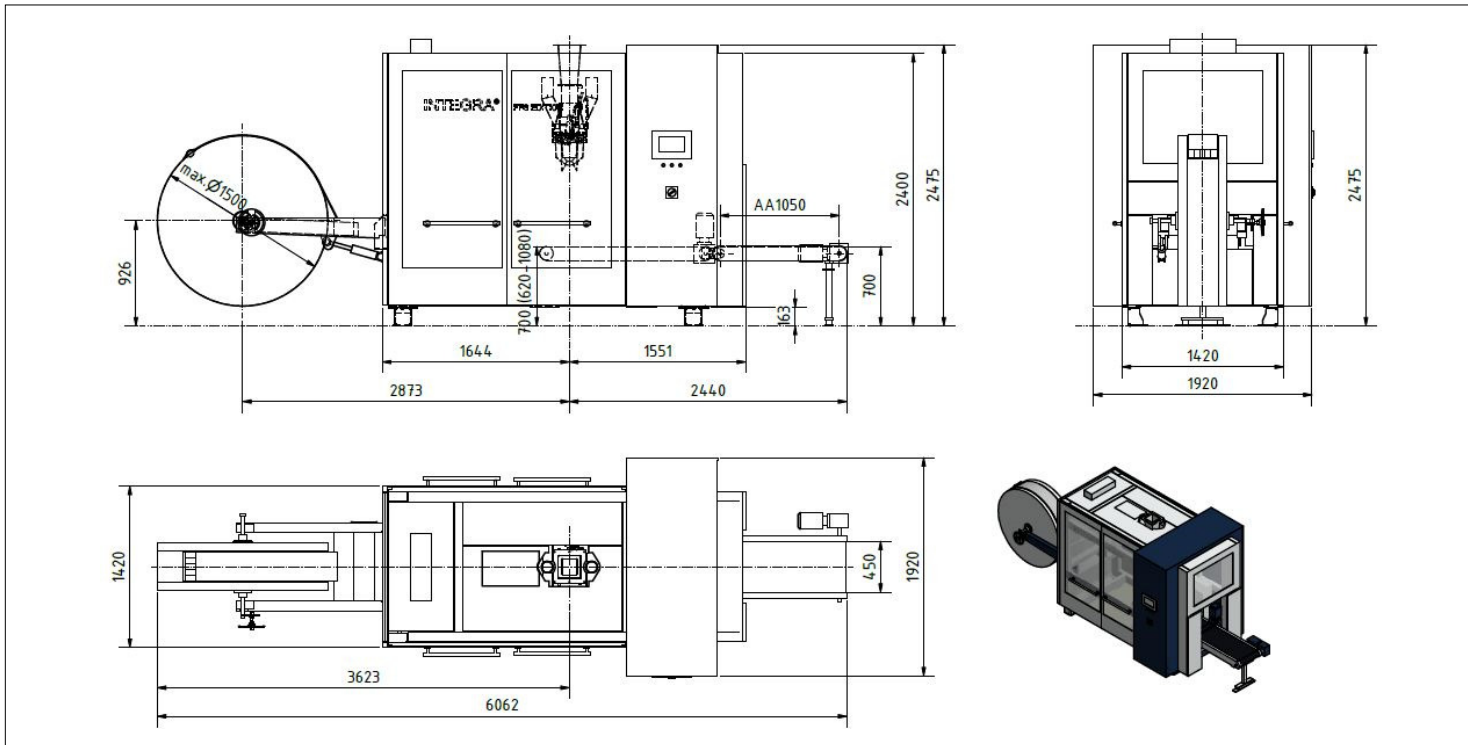
Your benefits:

- ✓ Increased performance due to higher availability
- ✓ Reduction of costs for operation, cleaning and maintenance



INTEGRA ISF1 FFS EDITION

AVENTUS



Products

Microgranules, granules, pastilles, pellets, flakes



Bags

Bags made of tubular PE film



Weights

5 to 50 kg/bag



Performance

Modular expandability to up to 2,200 bags/hr

TECHNICAL DATA

Standard bag sizes (Other sizes on request)	Bag lengths variable from 500 to 1,000 mm Bag widths variable from 300 to 420 mm
Bag closing	Welding
Installed capacity	Approx. 22 kW
Power consumption	Approx. 6.8 kwh
Instrument air consumption	Approx. 120 m ³ /hr
Dedusting air	Approx. 750 m ³ /hr
Instrument air pressure	Approx. 6 bar
Noise level	72.4 dB(A)

The shown machines and equipment as well as the indicated technical parameters only represent examples of technical solutions. We reserve the right to make changes at any time without notice.

